



# INGENII™

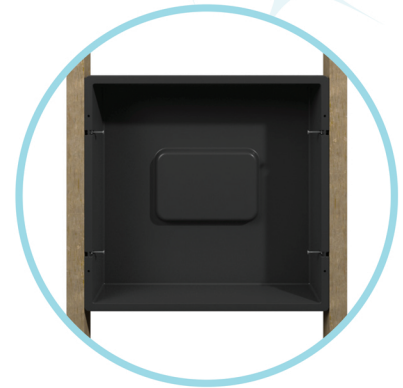
## GEN2™ BOX Installation Instructions

### REQUIRED FOR INSTALLATION

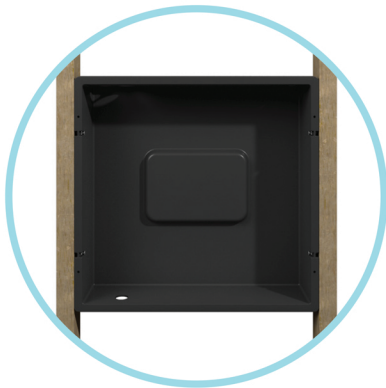
- 4 screws to attach to studs
- 4 screws to attach cover
- RTV caulk/caulk gun (for ACH sealing)
- Properly sized fine tooth hole saw for cutting
- Saw/multi-tool to remove protective cut-out

### DIMENSIONS

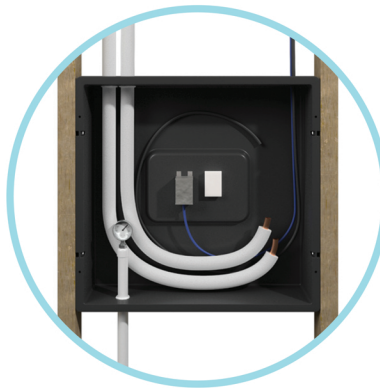
- 13.75" (H) x 14.25" (W) x 3.25" (D)
- Weight: 2.5lbs



Determine unit placement to install box. Attach to studs using four screws.



Drill entry and exit holes.



Install drainpipe, linesets, high/low voltage wiring.



Attach cover—ready for drywall.



Drywall over box, remove cut out.



Position lineset, drain hose, wiring through opening.



Install mounting plate and ductless mini-split head.





# GEN2™ BOX

## Installation Instructions

- Ingenii's GEN2™ Box is intended to be a component of a ductless heat pump (DHP) system. As such:
  - A minimum of 16" between studs must be available for installation of the GEN2™ Box.
  - Minimum wall depth or cavity is 3.5".
  - Minimum installation clearances will be determined by DHP equipment manufacturer. Consult DHP manufacturers' installation instructions.
  - The GEN2™ Box is not subject to any altitude constraints. Altitude constraints will be determined by DHP equipment manufacturer. Consult DHP manufacturers' installation instructions.
- The GEN2™ Box is to be installed by qualified HVAC professionals:
  - The enclosure is not to be installed by persons (including children) with reduced physical, sensory or mental capabilities, or lack of experience and knowledge, unless they have been given supervision or instruction.
  - This is not a toy. Children should not be allowed to play with the GEN2™ Box.
- Installation of the GEN2™ Box in framing requires four screws.
  - Wood framing - #8 x 1.5" wood screws. McMaster Carr part # 91070A257 or equivalent.
  - Metal framing #8 x 1.5" rounded head drilling screws. McMaster Carr part number 94060A203 or equivalent.
  - Installation of the box must be recessed 3/8" from the front face of the framing members for the box to properly be covered with drywall.
  - Set GEN2™ Box height according to evaporator manufacturers requirement for clearances.
- Drill appropriately sized holes in box with fine toothed hole saws for required components.
- Install condensate drain line, linesets, high and low voltage wiring. Install all required supports and electrical strain relief per NEC or local code.
- The GEN2™ Box shall be installed in accordance with local electrical code. Ingenii's GEN2™ Box is designed to function in a 'pass-through' capacity for line voltage wiring. As such:
  - Electrical code dictates that installations cannot run both high and low voltage wiring through the same entry. Separate holes must be drilled for high and low voltage wiring. Space entry points to maintain appropriate separation.
  - Electrical wiring cannot be installed in the same entry as the refrigerant linesets.
  - Electrical wiring cannot be installed in the same entry as the condensate drainpipe or the flexible hose from a condensate pump.
- Ancillary devices must be installed per manufacturer's instructions and secured with ANSI B18.6.3 compliant machine screws
  - While device sizes may vary, #6 x .5" self-threading screws for plastic are required and cannot exceed .5" in length. McMaster Carr part number 92325A101 or equivalent.
  - All ancillary devices are to be installed in accordance with the device manufacturer's instructions.
  - Ancillary devices mounted to the back of the GEN2™ Box must be installed on the raised section only, so screws do not protrude beyond the GEN2™ Box.
- Attachment of the GEN2™ Cover to the GEN2™ Base requires ANSI B18.6.3 compliant machine screws. Size #8 x .5" thread forming screws for plastic are required. McMaster Carr part # 90380A148 or equivalent
- Mounting Bracket Use: The Ingenii GEN2™ Box is designed to work with all known DHP manufacturers and models, which supply their own mounting brackets. Follow all manufacturers' installation instructions for the mounting bracket. Note that all metal mounting brackets must be electrically bonded to the indoor unit when electrical components are installed in the GEN2™ Box. No more than 0.1ohm resistance between the metal plate and the grounding terminal of the indoor unit is allowed.

