



INGENII™

FLASH 5™ & FLASH 8™ Installation Instructions

REQUIRED FOR INSTALLATION

- 4 screws to attach base to wall
- 3 screws to attach cover to base (included)
- Properly sized hole saw for cutting

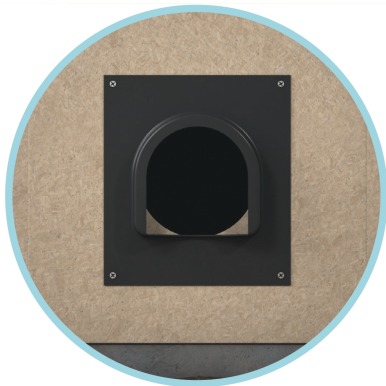
DIMENSIONS

BASE

- 18" (H) x 16" (W) (depth depends on hood size)

HOOD

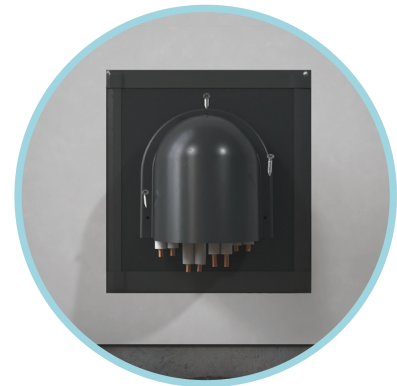
- **FLASH 5™** 11.5" (H) x 11" (W) x 5" (D)
- **FLASH 8™** 12" (H) x 11" (W) x 8" (D)



Determine placement of flashing. Drill appropriate sized hole for linesets to penetrate wall. Attach base with 4 screws.



Pull linesets through wall and base of flashing.



Place hood over linesets and secure with 3 included screws.



Finalize connections to outdoor unit and paint exposed flashing for UV protection.

